



37 Hollow Drive

Thornton, Liverpool, L23 4TD

Prices from £254,995



Plot 153 the Ashton includes a stunning furniture package! To feature an OPEN PLAN KITCHEN, DINING and LIVING area. TWO BEDROOMS with EN SUITE to the large primary bedroom and FAMILY BATHROOM.

Need to sell your home? EASYMOVE scheme available, call us for details.

The Ashton
This delightful two bedroom terraced home is perfect for first time buyers. With a welcoming hallway leading to a spacious open plan kitchen, dining, living area which is perfect for entertaining or relaxing with family. Two spacious bedrooms are located on the top floor along with en-suite to master and a separate family bathroom. Downstairs cloaks and off road parking complete this wonderful family home.

About the development



Kitchen/Dining 15'0" x 10'11" (4.58 x 3.33)

Lounge 15'7" x 11'1" (4.75 x 3.39)

Cloaks 5'1" x 3'7" (1.56 x 1.10)

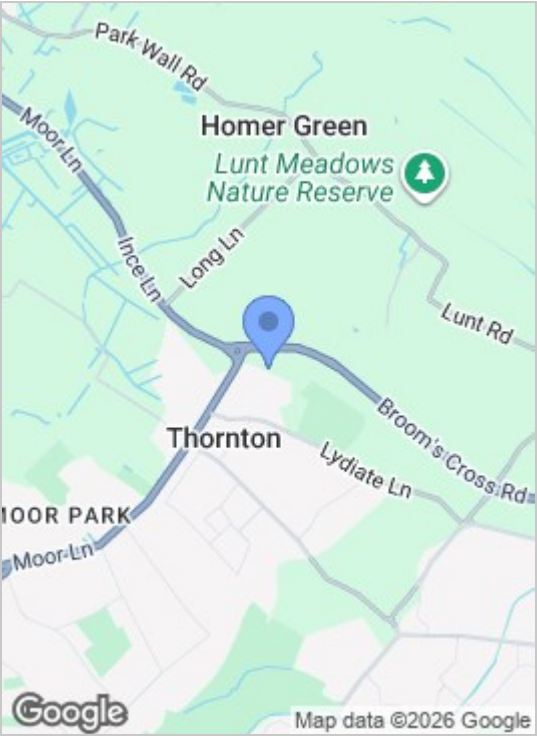
Bedroom 1 15'0" x 10'7" (4.58 x 3.25)

En-Suite 7'10" x 3'10" (2.40 x 1.18)

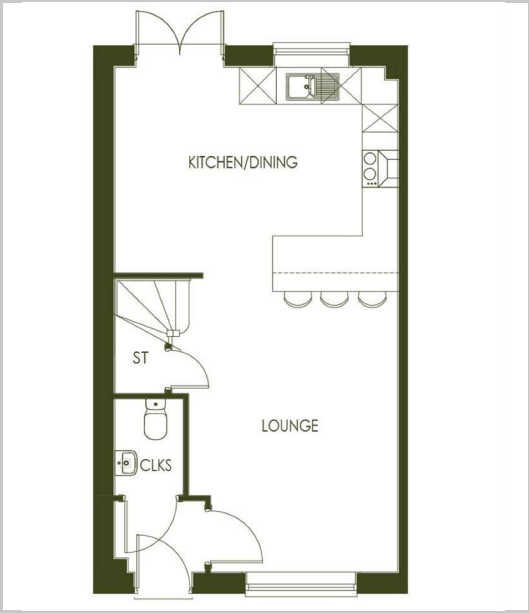
Bedroom 2 11'8" x 7'10" (3.56 x 2.40)

Bathroom 6'10" x 6'1" (2.09 x 1.87)

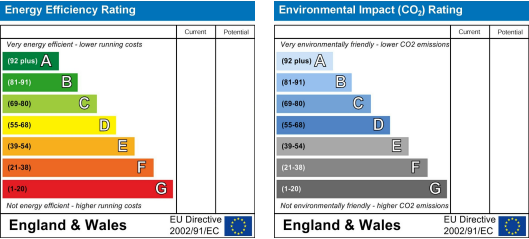
Area Map



Floor Plans



Energy Efficiency Graph



These particulars, whilst believed to be accurate are set out as a general outline only for guidance and do not constitute any part of an offer or contract. Intending purchasers should not rely on them as statements of representation of fact, but must satisfy themselves by inspection or otherwise as to their accuracy. No person in this firms employment has the authority to make or give any representation or warranty in respect of the property.